



The Future of **Sultan's** **Neighborhoods**

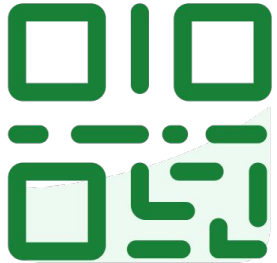
Sultan Comprehensive Plan Update

November 15, 2023

Agenda.

1. **Welcome & Introductions**
2. **Night #1 & #2 Recap**
3. **Area Overview & Context Analysis**
4. **Polling**
 - 4.1. Neighborhood Design
 - 4.2. Infill Housing
 - 4.3. Mobility Options
 - 4.4. Neighborhood Destinations
5. **Q&A**

slido



Join at [slido.com](https://www.slido.com)
#3350997

① Click **Present with Slido** or install our [Chrome extension](#) to display joining instructions for participants while presenting.



**Sultan
2044**

November 15, 2023

slido



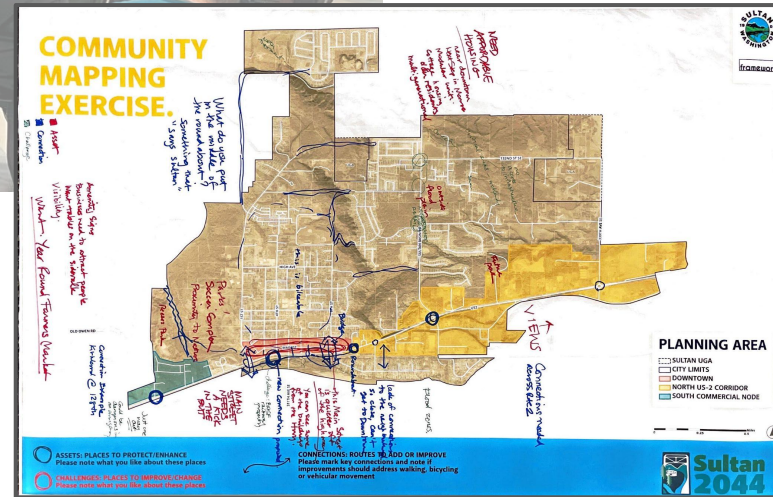
How much of the Planning Summit have you attended?

① Click **Present with Slido** or install our [Chrome extension](#) to activate this poll while presenting.

Night #1 Recap

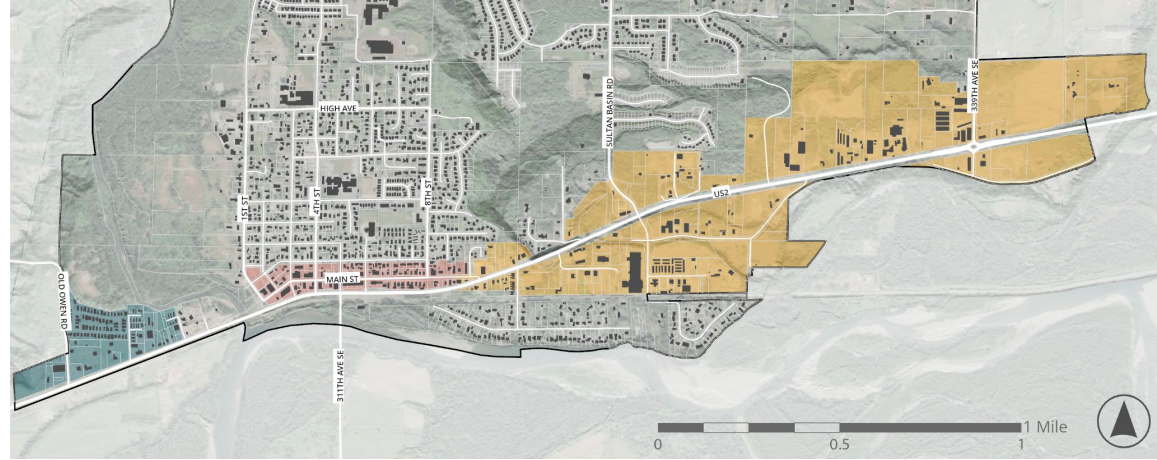


- Comprehensive planning education
- Community Visioning
- Community Mapping: Assets, Challenges, Connections



Night #2 Recap

- Downtown
- West Commercial Node
- East US-2 Corridor



Rank the examples for how intersections and roundabouts should be used?



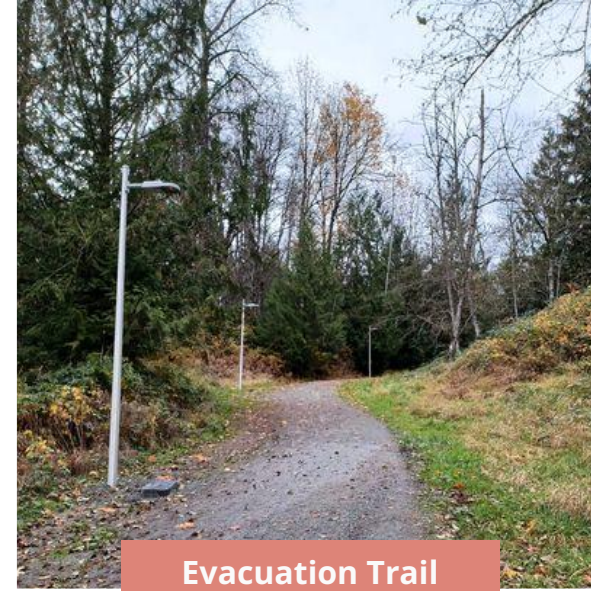
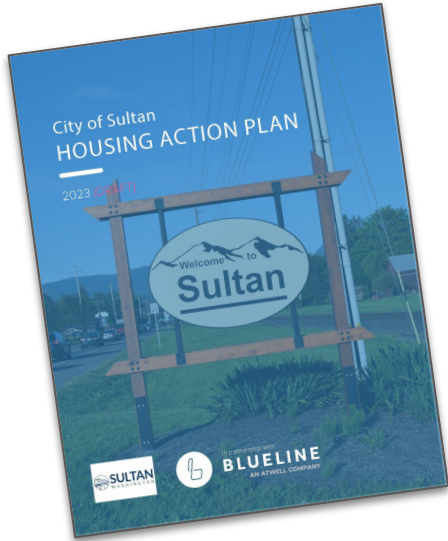
Given safe and supportive infrastructure, which modes of travel would you use to access downtown?



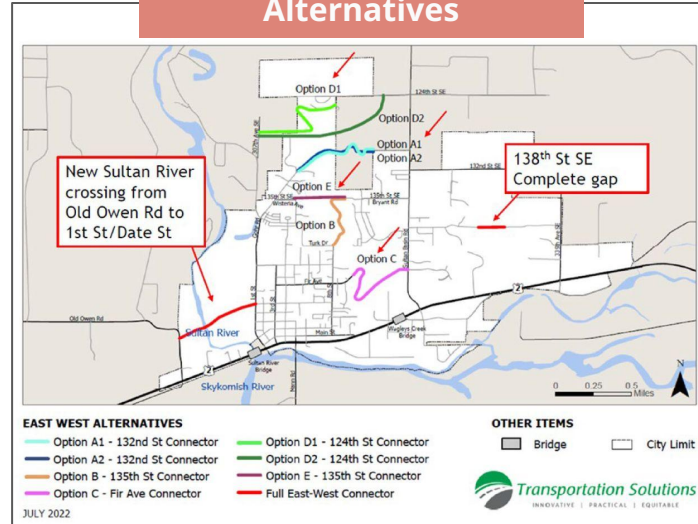
Context Analysis.

- Past/Ongoing City Initiatives
- Zoning
- Development Capacity
- Housing Types
- Transportation

City Initiatives

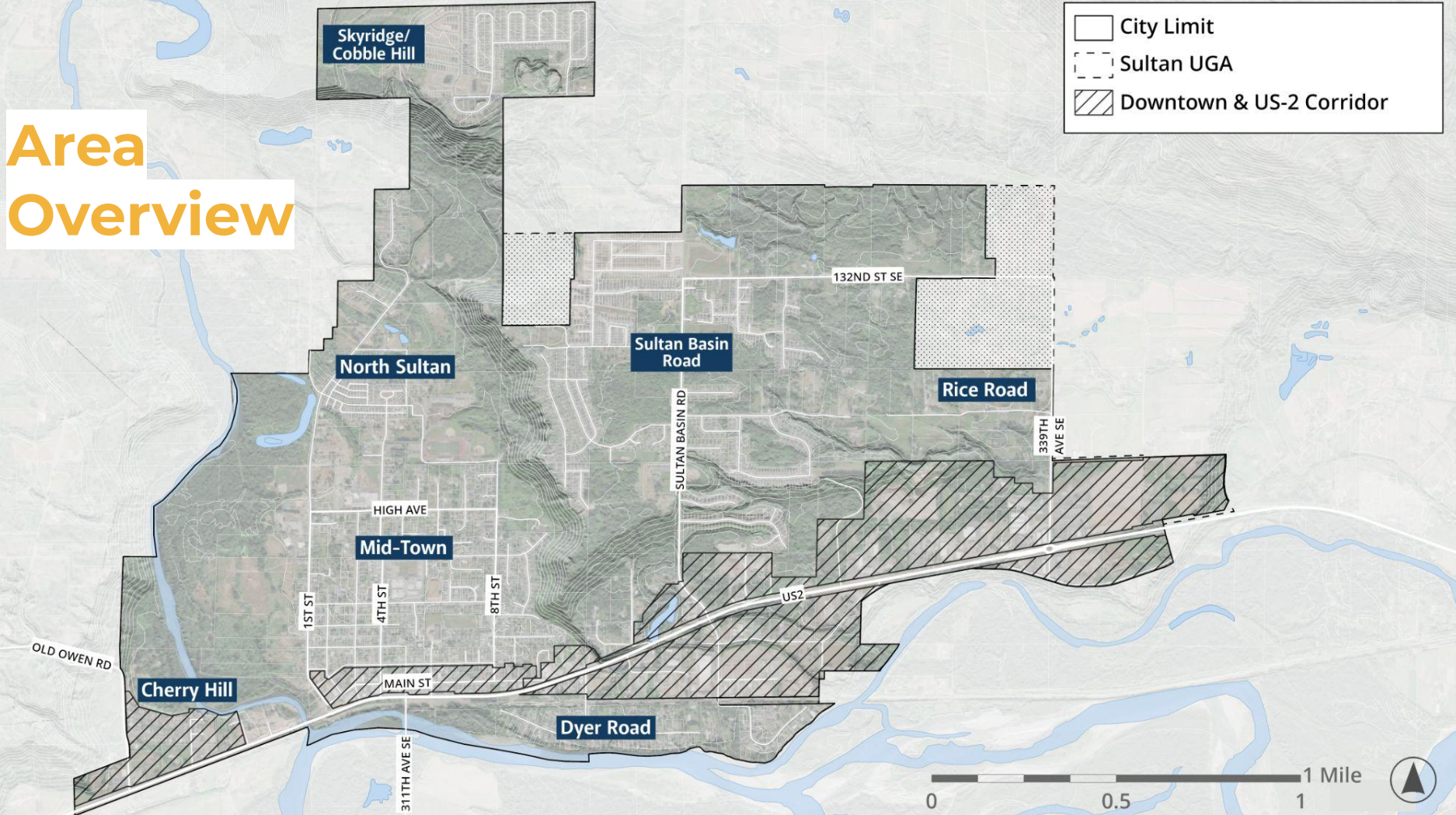


East-West Connector Alternatives

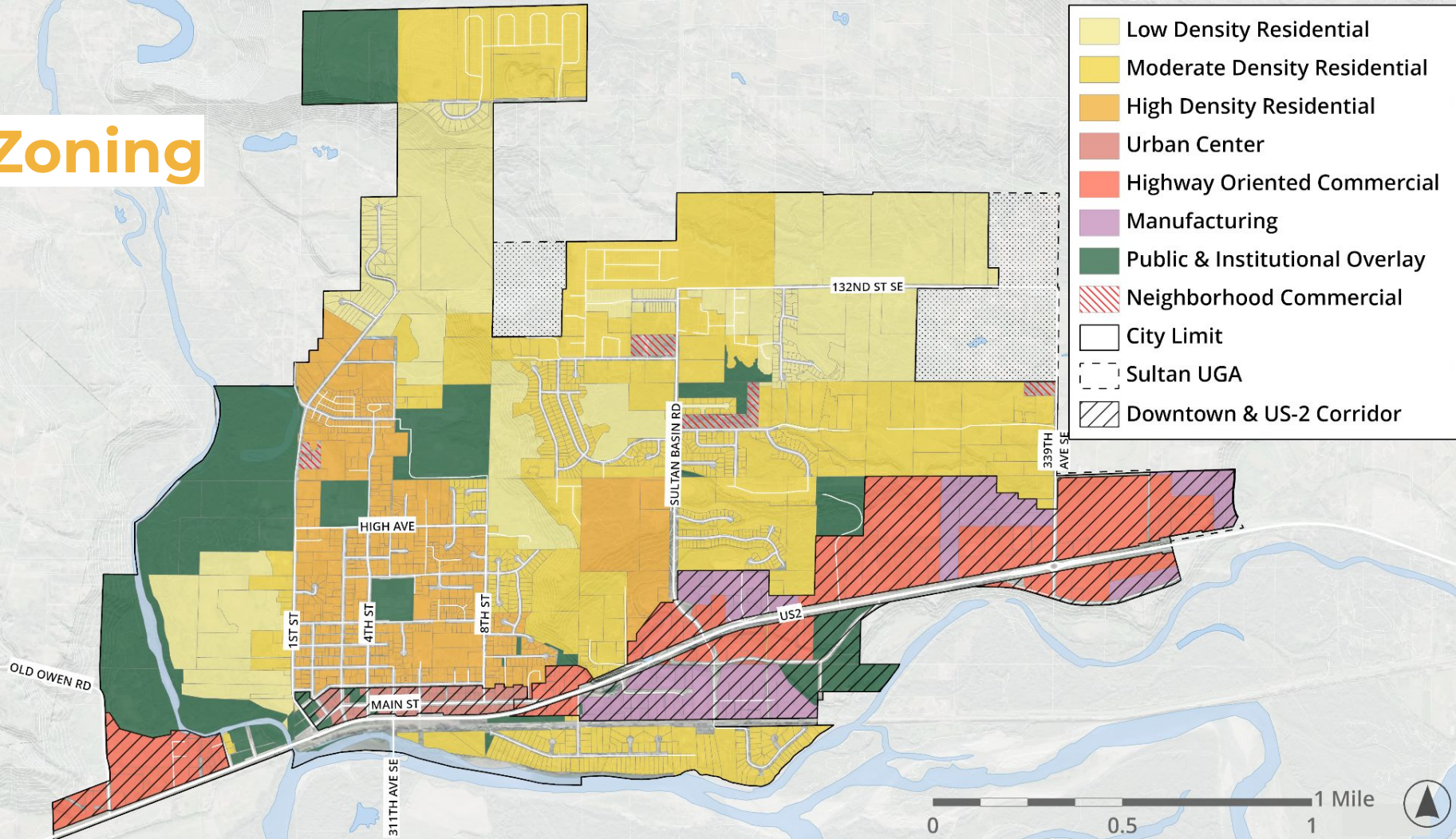


Area Overview

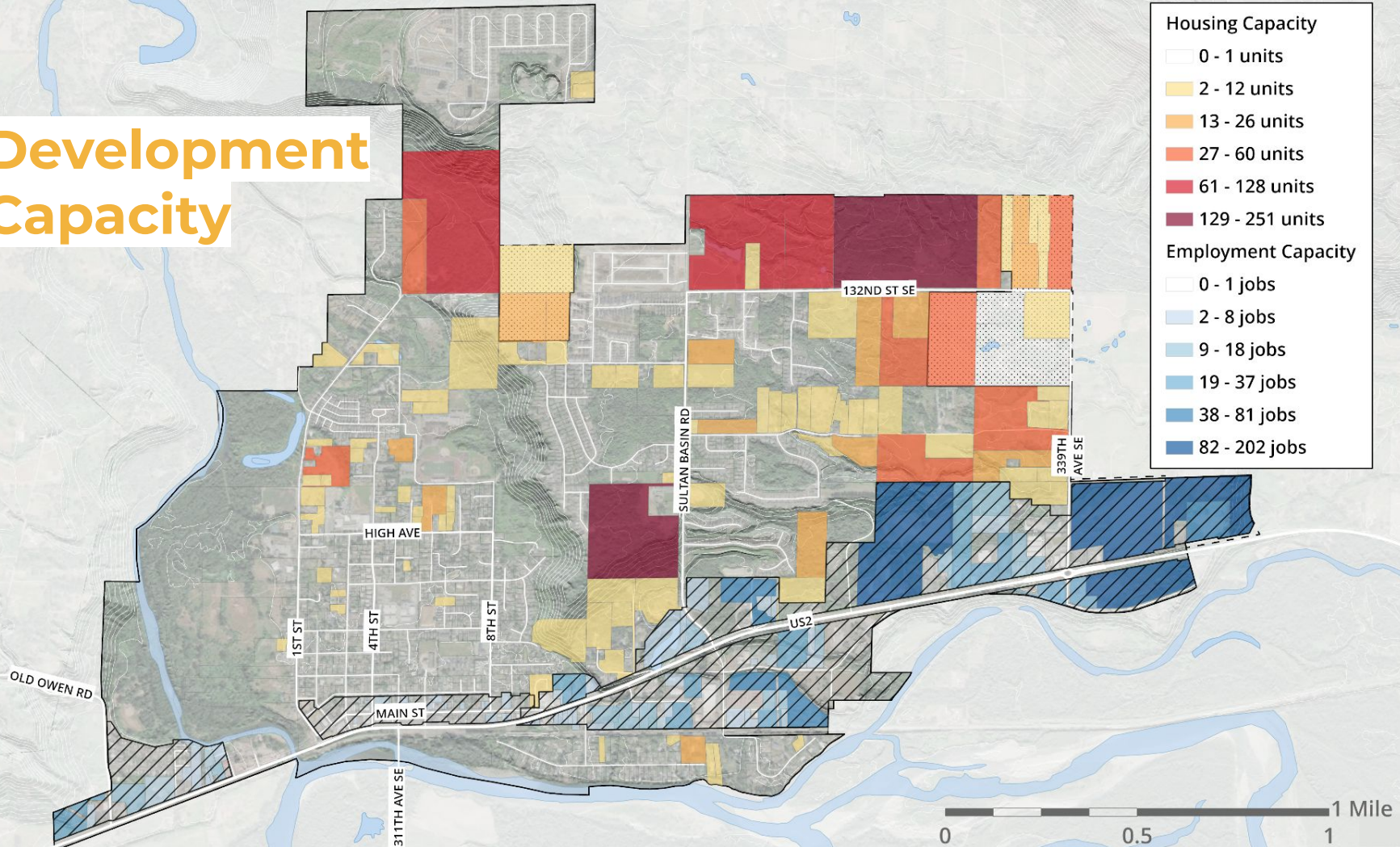
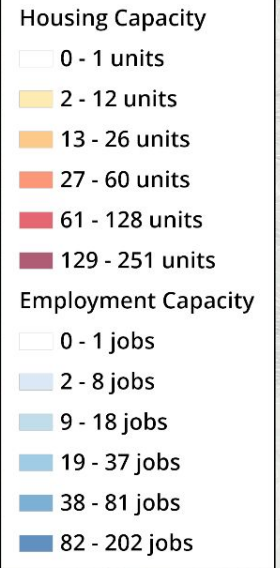
-  City Limit
-  Sultan UGA
-  Downtown & US-2 Corridor



Zoning



Development Capacity



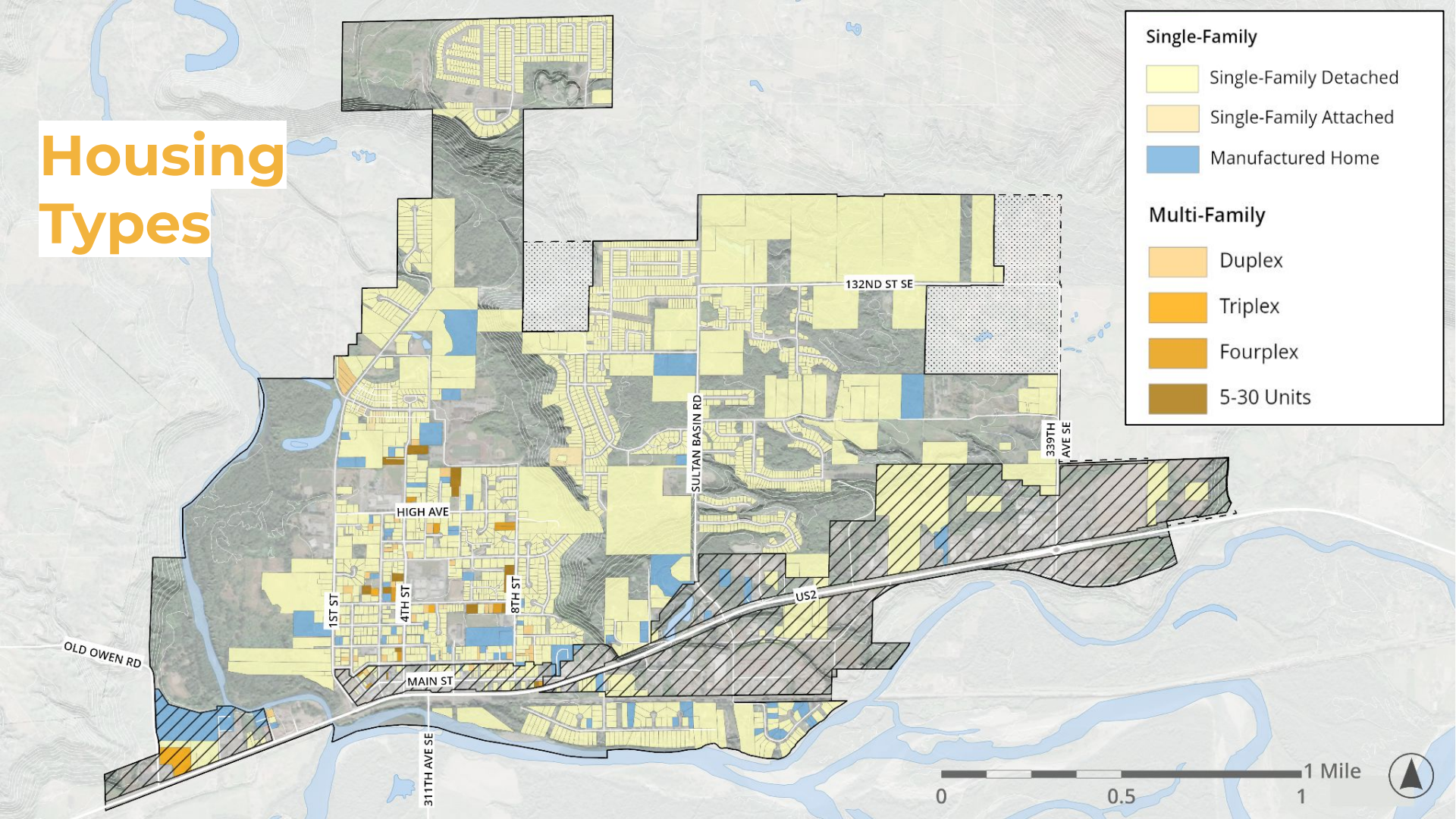
Housing Types

Single-Family

- Single-Family Detached
- Single-Family Attached
- Manufactured Home

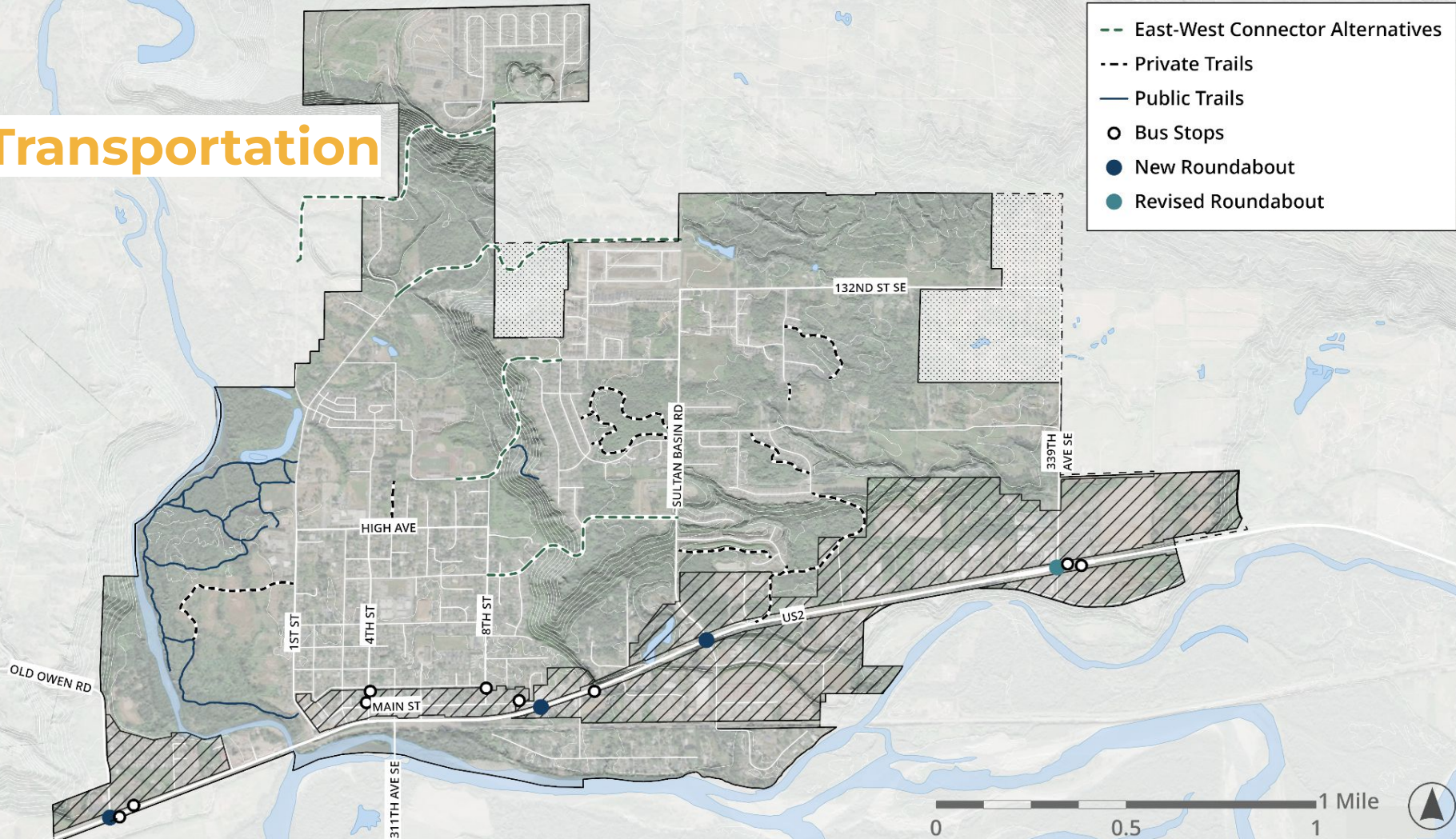
Multi-Family

- Duplex
- Triplex
- Fourplex
- 5-30 Units

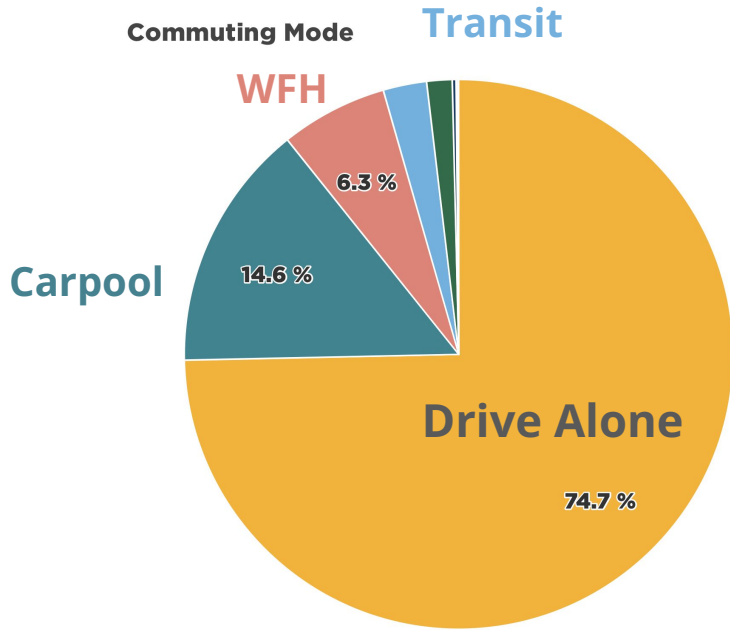


Transportation

- - - East-West Connector Alternatives
- - - Private Trails
- Public Trails
- Bus Stops
- New Roundabout
- Revised Roundabout



Employment



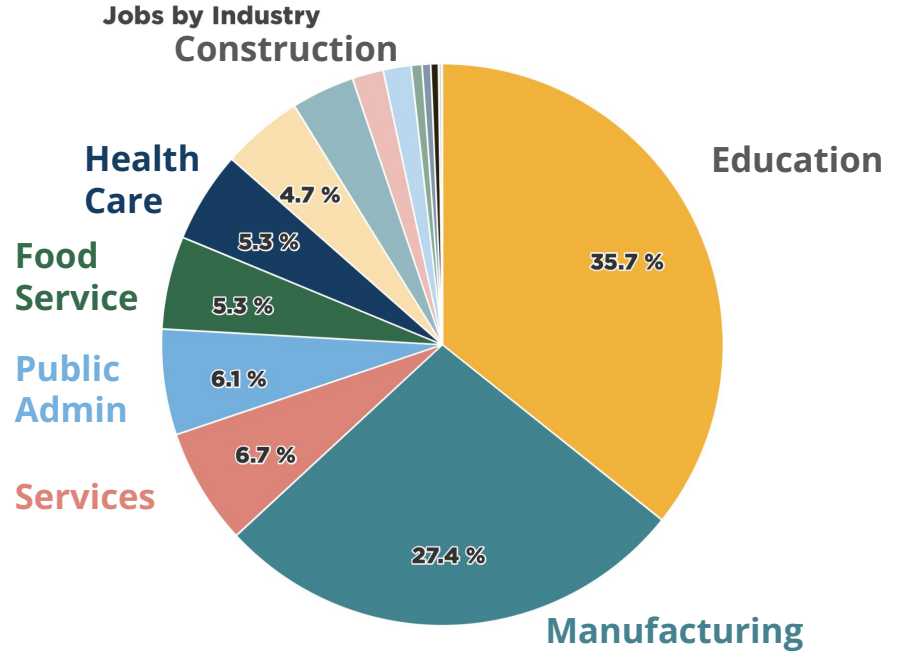
Sources: US Census Bureau ACS 5-year 2017-2021



848

Jobs

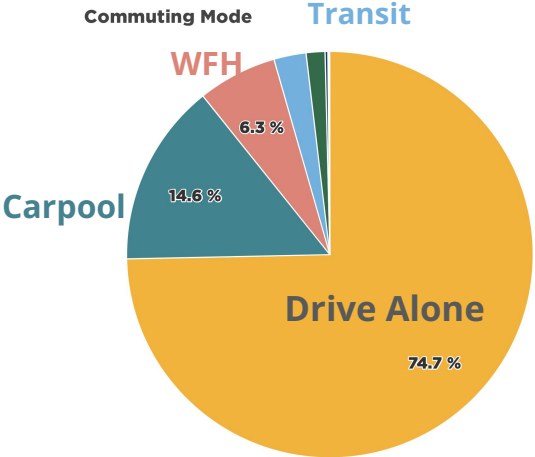
Total # of Jobs



Sources: LODES Version 8.0 2020

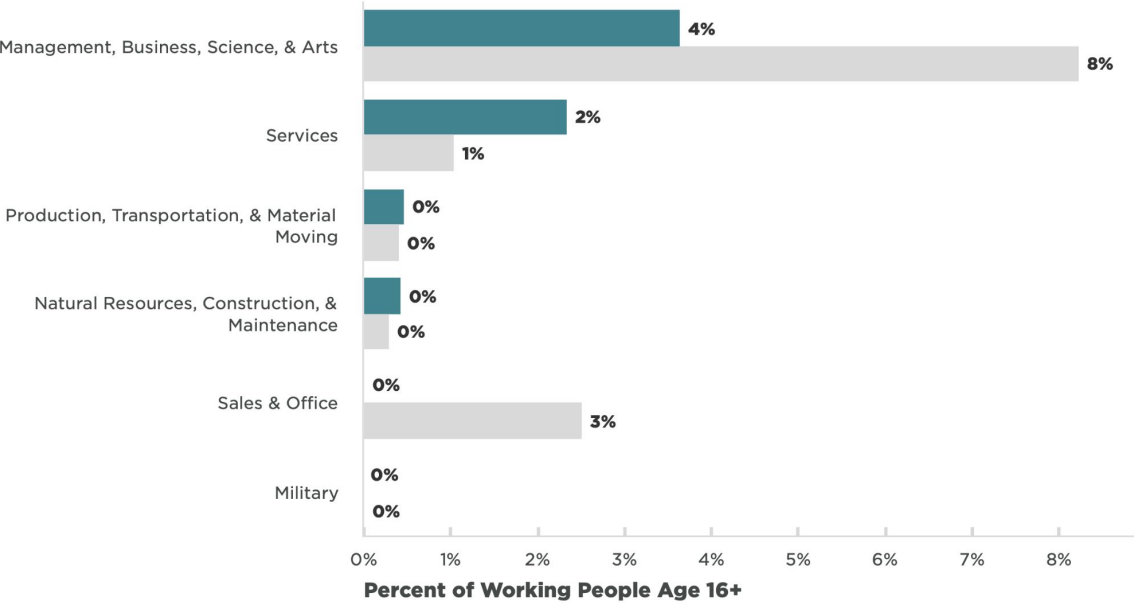


Employment



Sources: US Census Bureau ACS 5-year 2017-2021

Work from Home Sectors



Legend: Sultan's Neighborhoods (Dark Teal), Snohomish County, WA (Light Grey)

Sources: US Census Bureau ACS 5-year 2017-2021

Demographics

4,804
People
Total Population

35.5
Years
Median Age

Children
26%
Population Under Age 18
Sultan's Neighborhoods

23%
Population Under Age 18
Snohomish County, WA

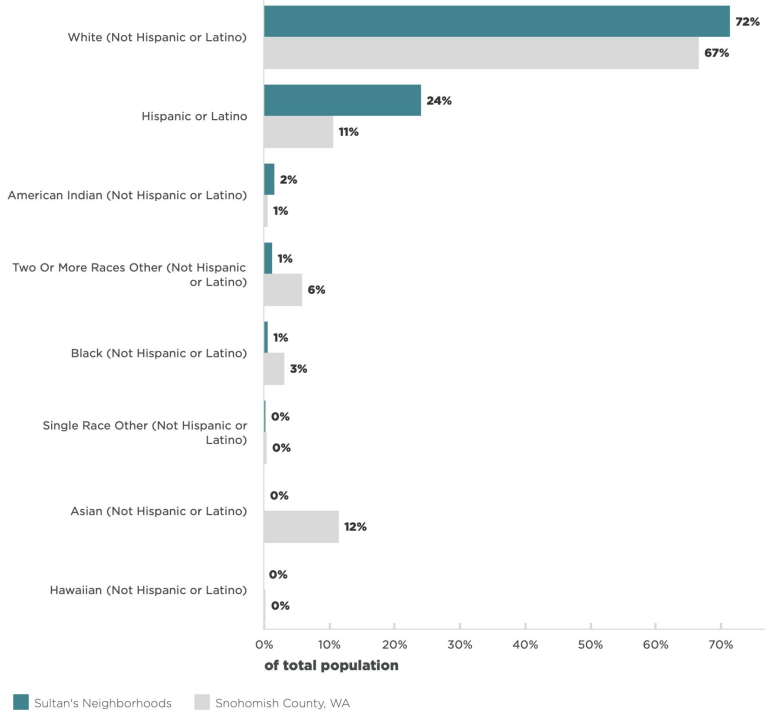
Seniors
12%
Population Age 65 and Over
Sultan's Neighborhoods

13%
Population Age 65 and Over
Snohomish County, WA

BIPOC Population
28.4%
Sultan's Neighborhoods

33.2%
Snohomish County, WA

Race/Ethnicity Totals



Demographics



Median Household Income

\$82,641

USD

Sultan's Neighborhoods

\$95,618

USD

Snohomish County, WA

Median Home Value

\$325,703

USD

Sultan's Neighborhoods

\$483,000

USD

Snohomish County, WA

Cost Burdened Households

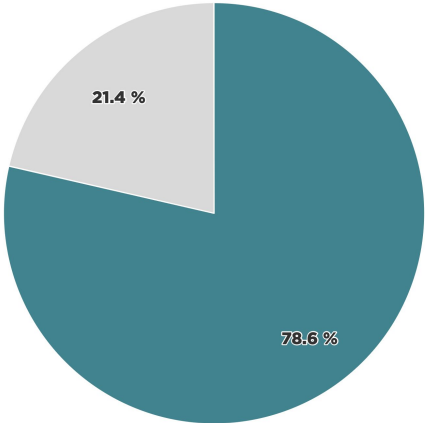
22.3%

Sultan's Neighborhoods

32.4%

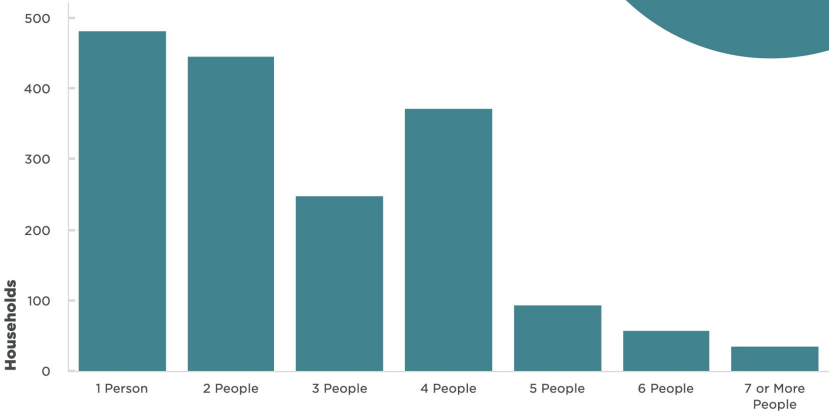
Snohomish County, WA

Owner vs Renter Occupied



Owner Occupied
Renter Occupied

Household Size

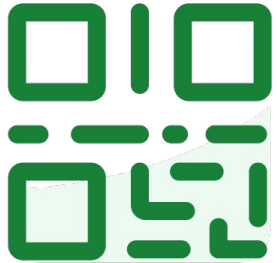


Neighborhood Design

Existing Neighborhood Design.



slido



Join at [slido.com](https://www.slido.com)
#3350997

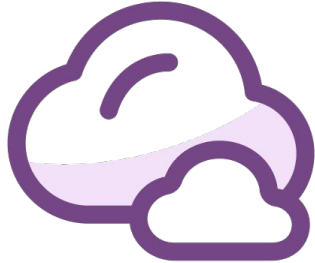
① Click **Present with Slido** or install our [Chrome extension](#) to display joining instructions for participants while presenting.



**Sultan
2044**

November 15, 2023

slido

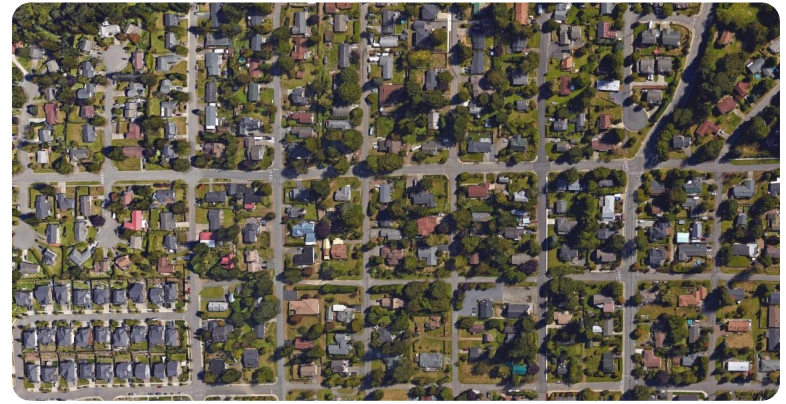


In one word, what do you love about your neighborhood?

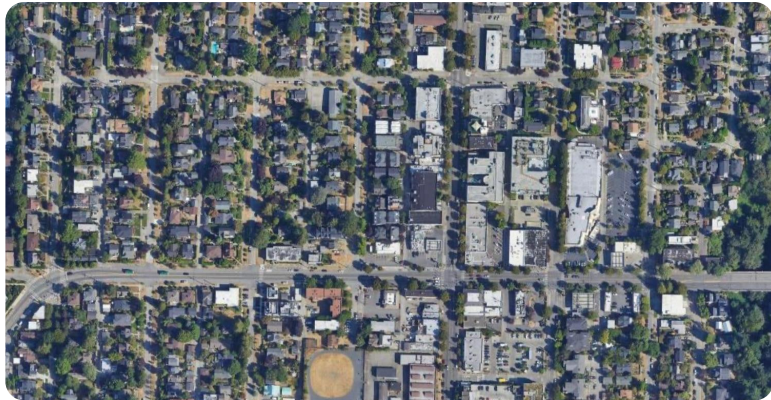
① Click **Present with Slido** or install our [Chrome extension](#) to activate this poll while presenting.



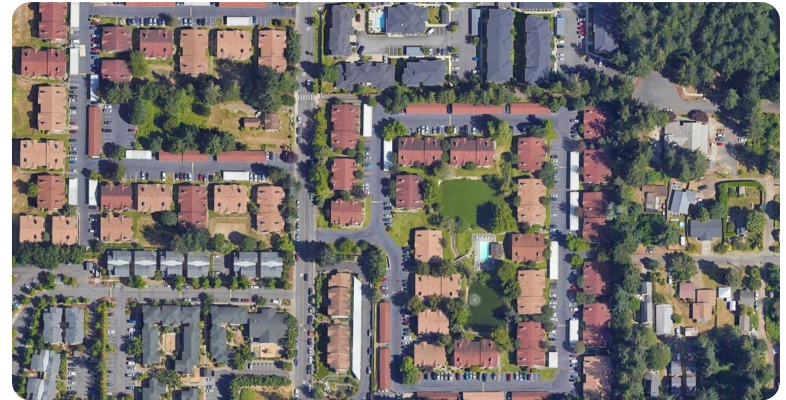
option a



option b

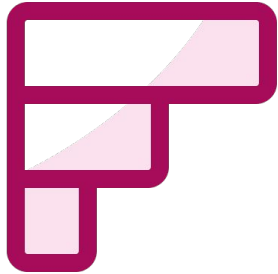


option c



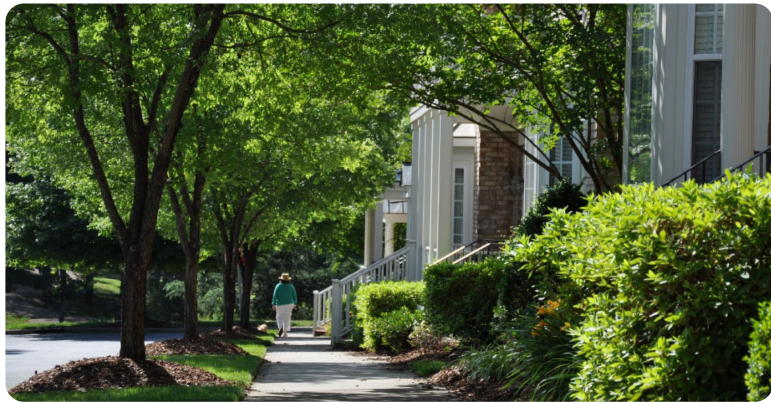
option d

slido



N 1.1: Rank the neighborhood development patterns that you prefer, from most desirable to least.

① Click **Present with Slido** or install our [Chrome extension](#) to activate this poll while presenting.



street trees



pocket parks

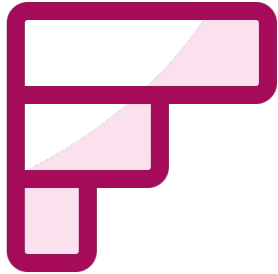


art installations



block parties

slido



N 1.2: What ideas should be prioritized to make Sultan's neighborhoods more community-oriented?

① Click **Present with Slido** or install our [Chrome extension](#) to activate this poll while presenting.

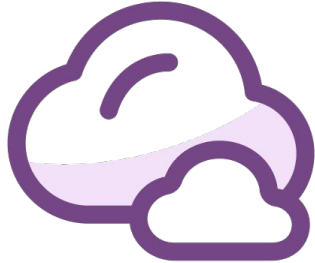
Infill Housing

Existing Infill Housing.





slido

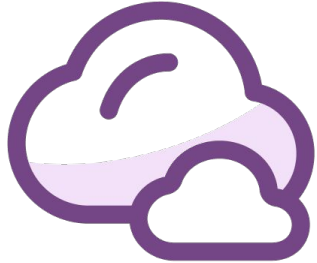


N 2.1: What elements do you like most about this photo?

- ① Click **Present with Slido** or install our [Chrome extension](#) to activate this poll while presenting.



slido



N 2.2: What elements do you like most about this photo?

- ① Click **Present with Slido** or install our [Chrome extension](#) to activate this poll while presenting.



cottage clusters



townhomes



ADUs



multi-family



single-family

slido



**N 2.3: What housing types should Sultan prioritize as the city grows?
Choose up to 3 answers.**

① Click **Present with Slido** or install our [Chrome extension](#) to activate this poll while presenting.



**Sultan
2044**

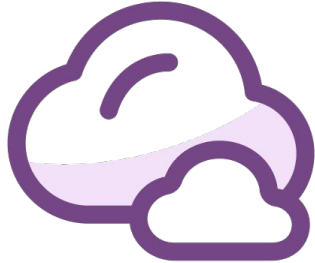
November 15, 2023

Mobility Options

Existing Mobility Options.



slido



N 3.1: What places in Sultan exist today that you want to access without a car, but can't?

① Click **Present with Slido** or install our [Chrome extension](#) to activate this poll while presenting.



driving



biking



carpooling



walking

slido



**N 3.2: Which transportation modes do you feel most comfortable using?
Choose all that apply.**

① Click **Present with Slido** or install our [Chrome extension](#) to activate this poll while presenting.



**Sultan
2044**

November 15, 2023



trail network



multi-use pathway

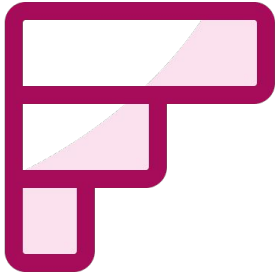


small neighborhood streets



complete streets

slido



N 3.3: Rank the types of connections between neighborhoods that you would like to see more of, from most desired to least.

- ① Click **Present with Slido** or install our [Chrome extension](#) to activate this poll while presenting.

Neighborhood Destinations

Existing Neighborhood Destinations.





slido



N 4.1: Do small corner stores or cafes have a place in Sultan's neighborhoods?

① Click **Present with Slido** or install our [Chrome extension](#) to activate this poll while presenting.



slido



N 4.2: Name some services, new types of businesses, or other amenities you would like to see in your neighborhood. Feel free to provide as many responses as you wish.

① Click **Present with Slido** or install our [Chrome extension](#) to activate this poll while presenting.



Community Mapping with Konveio



Sultan
2044

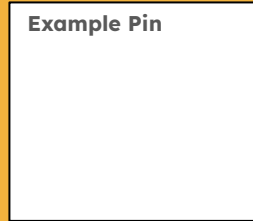
PLANNING SUMMIT SERIES

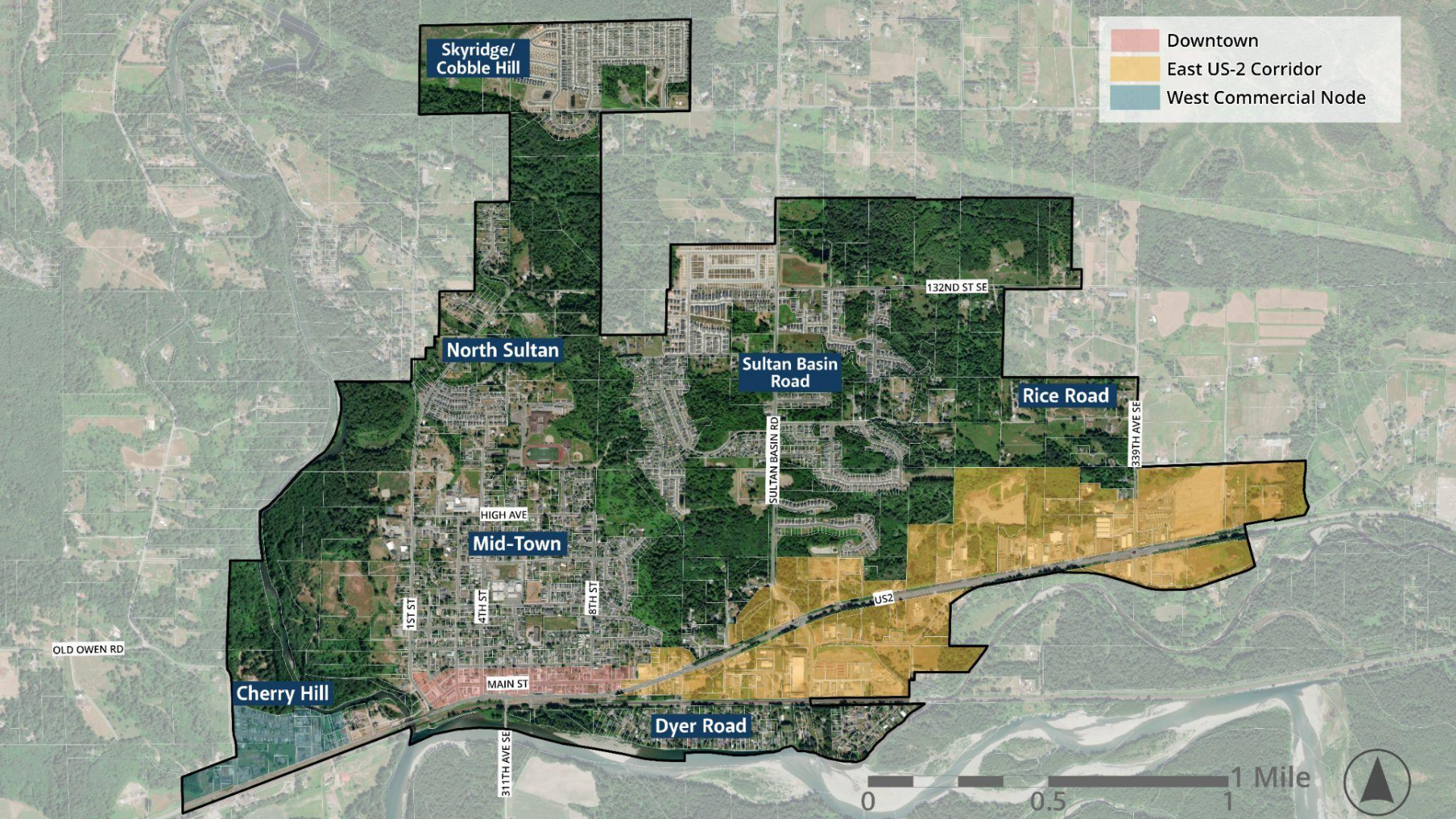


Sultan's Neighborhoods

Instructions

1. Review the map pages and click on the “pins” for more information and to provide input. Click on the example pin to the right.
2. You may also leave comments, questions, or suggestions by using the + button on your cursor and placing it on a map
 - You may also respond to comments from others
 - Click this example comment here:
 - Try leaving a comment in the white box to the left. Here





Skyridge/
Cobble Hill

- Downtown
- East US-2 Corridor
- West Commercial Node

North Sultan

Sultan Basin
Road

Rice Road

Mid-Town

Cherry Hill

Dyer Road

