



Transportation Element

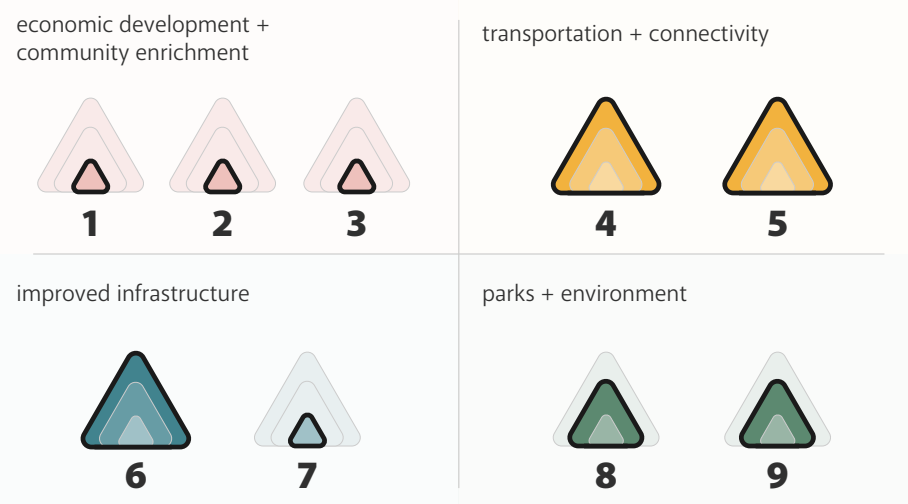
Element Purpose:

The Transportation Element of Sultan's Comprehensive Plan aims to enhance local and regional mobility for a growing population over the next twenty years. *It provides solutions to the current impacts of regional traffic on US2 that restrict mobility in the city.* It accommodates increased travel demand associated with population and employment growth planned for the City and broader region. The element focuses on a multi-modal transportation network to encourage walking, biking, and transit ridership in addition to motor vehicles. Non-motorized level of service standards are established to support pedestrian and bicycle mobility.

How it relates to Sultan's Community Vision:



Relationship to Vision Strategies (Nine Big Ideas):



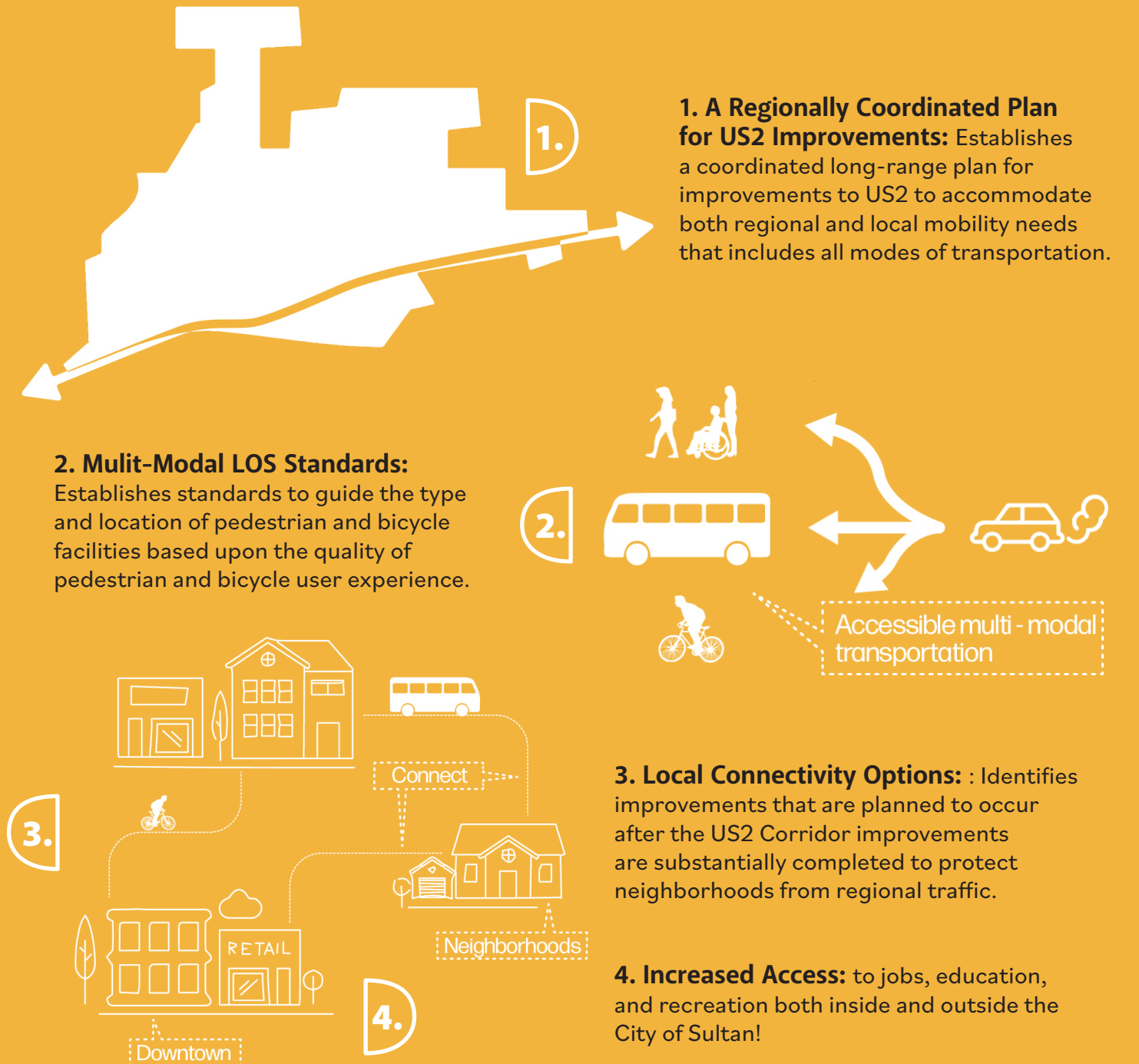
Key:



Why does the Transportation Element matter:

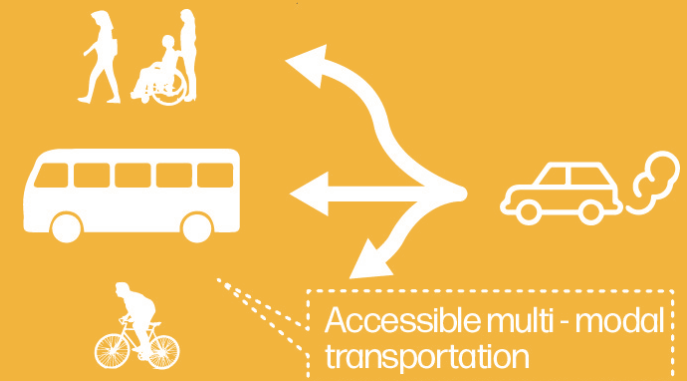
Mobility is fundamental to community. The ability to travel to work, school, recreation, and neighbors is key to economic security, education, health, and social interaction. For the first time, the Element includes a long range solution for impacts to local mobility in the City of Sultan created by regional through traffic on US2.

What's New:



1. A Regionally Coordinated Plan for US2 Improvements: Establishes a coordinated long-range plan for improvements to US2 to accommodate both regional and local mobility needs that includes all modes of transportation.

2. Multi-Modal LOS Standards: Establishes standards to guide the type and location of pedestrian and bicycle facilities based upon the quality of pedestrian and bicycle user experience.



3. Local Connectivity Options: Identifies improvements that are planned to occur after the US2 Corridor improvements are substantially completed to protect neighborhoods from regional traffic.



4. Increased Access: to jobs, education, and recreation both inside and outside the City of Sultan!