



Community Design Element

Element Purpose:

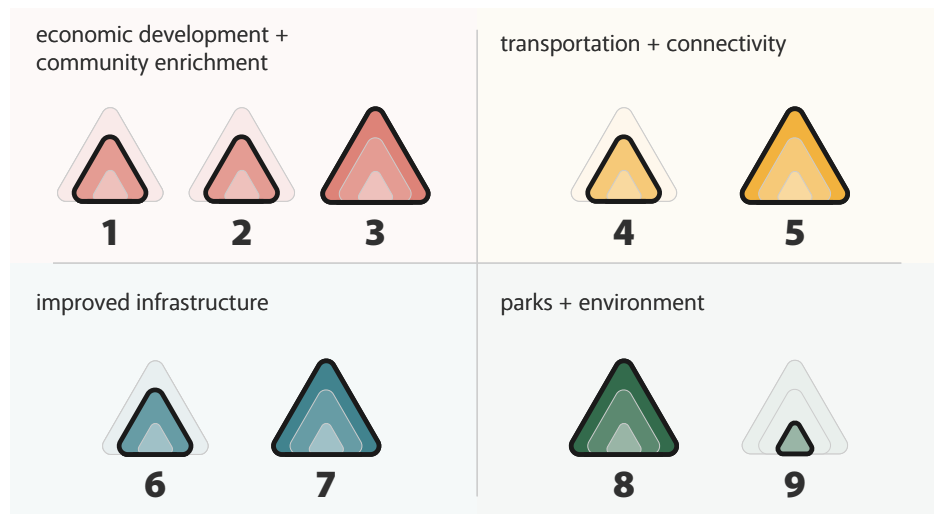
Sultan's 2044 Community Design Element focuses on urban design, aesthetics, and community identity. It celebrates the city's mill town heritage, elevates arts and culture, maintains a small-town feel, and enhances the US-2 corridor. The plan emphasizes blending new development seamlessly, preserving Sultan's natural backdrop, and creating vibrant, welcoming public spaces.

Key themes include integrating traditional development patterns, enlivening public spaces with events and art, and celebrating Sultan's heritage. Community feedback highlights the need for improved public spaces, community events, and better-designed neighborhoods. The Community Design Element also intersects with other plan elements, guiding goals for interconnected parks, trails, and climate-resilient landscaping. Overall, it balances Sultan's natural beauty with thoughtful growth and development.

How it relates to Sultan's Community Vision:



Relationship to Vision Strategies (Nine Big Ideas):



Key:

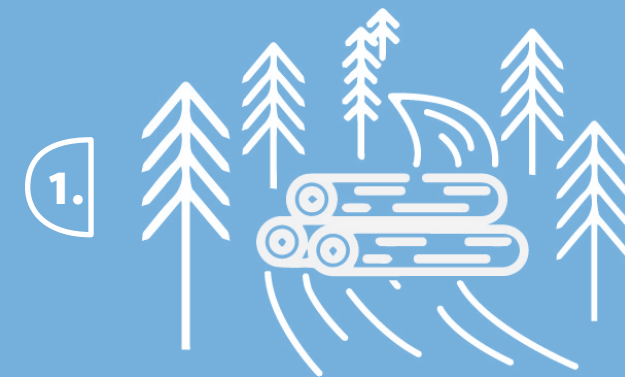


Why does the Community Design Element matter:

Sultan's Community Design Element shapes the City's vision for 2044, emphasizing urban design, aesthetics, and community identity. It celebrates the City's mill heritage, promotes culture, maintains a small-town feel, and enhances the US-2 corridor. This element guides neighborhood design and creates vibrant public spaces, reflecting Sultan's natural beauty and mountain views.

This element strengthens community identity, preserves historic resources, and enhances urban design across Downtown, in neighborhoods, and along corridors. The goals and policies here influence other parts of the Comprehensive Plan, ensuring cohesive growth aligned with the town's values and vision.

What's New:



1. Celebration of Mill Town Heritage: Emphasis on Sultan's historic mill town roots to strengthen community identity and pride.

2. Integration of Arts and Culture: A greater focus on elevating arts and culture through public spaces and events, including placemaking.



3. Distinct Small-Town Feel: Policies to nurture Sultan's small-town charm while guiding the design of new development to blend with existing aesthetics.

4. Enhanced US-2 Corridor: Specific initiatives to improve the visual and functional aspects of Sultan's main thoroughfare, creating welcoming gateways and improving streetscape design.



5. Volume II Analysis: Addition of a new Volume II that provides a detailed analysis of Sultan's existing community design, informing future planning and development strategies.