



Community Visioning Workshop

Sultan Comprehensive Plan Update

November 13, 2023



Agenda.

1. Welcome & Introductions
2. Project Overview
3. Comprehensive Planning 101
4. Community Visioning Exercise
5. Community Mapping Exercise (small groups)
6. Q&A





**Sultan
2044**

PLANNING SUMMIT SERIES



Future of Downtown & US-2 Corridor

Tuesday, Nov 14 @ 7pm

Online via Zoom

Alternative: City Hall Watch Party

Future of Sultan's Neighborhoods

Wednesday, Nov 15 @ 7pm

Online via Zoom

Alternative: City Hall Watch Party

Please RSVP!

www.sultan2044.com

Slido Engagement Tool

**Please leave
questions in
the Q&A forum
as they arise!**

Join at slido.com
#1943484

Scan Here!



Ice-breaker!

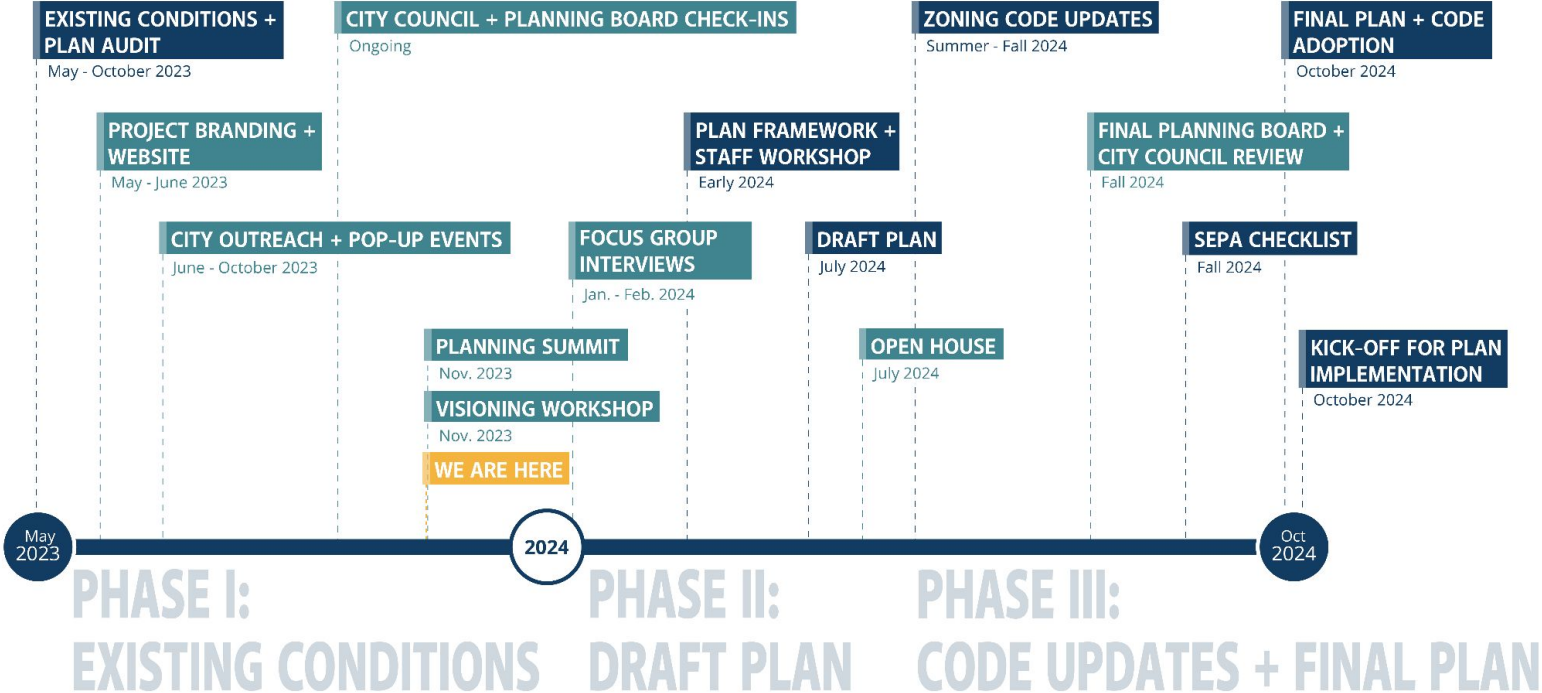
slido



What percent of the city's residential land will be impacted by a 100 year flood?

① Click **Present with Slido** or install our [Chrome extension](#) to activate this poll while presenting.

Project Timeline.



Comprehensive Planning 101

Comprehensive Plans outline goals, policies, and actions to guide the daily decisions of community decision-makers.

Mandatory Elements for Sultan (RCW 36.90A.070)

- Land Use
- Housing
- Capital Facilities Plan
- Utilities
- Transportation

Optional Elements

- Economic Development
- Parks and Recreation (Sultan PROS Plan Adopted 2020)
- Conservation
- Climate Change & Resiliency (required by 2029)
- Subarea Plans (Neighborhoods)



Comprehensive Planning 101



Land Use



Housing



Economic
Development



Parks and
Recreation



Capital
Facilities



Utilities



Natural
Environment

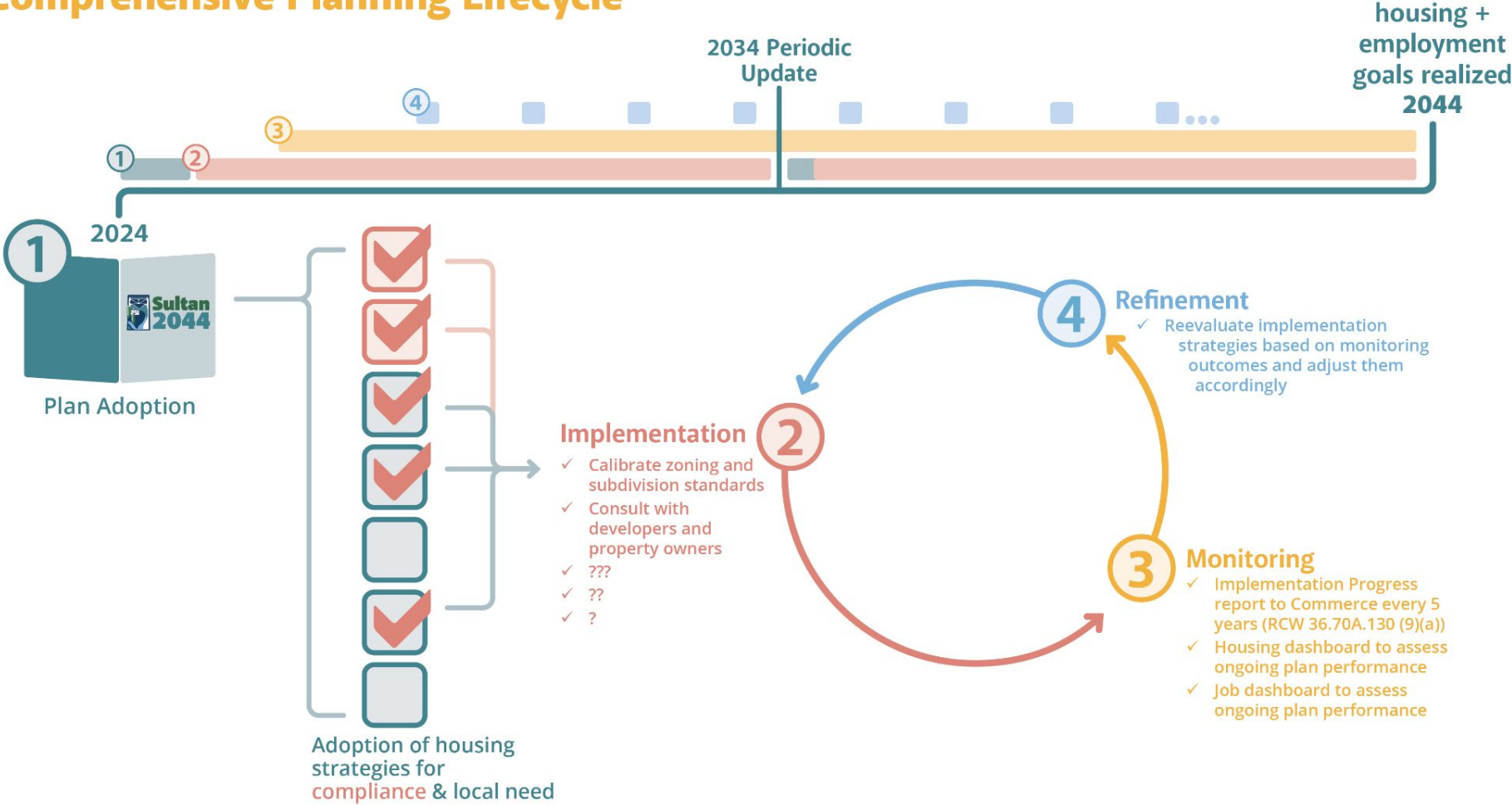


Transportation



Community
Design

Comprehensive Planning Lifecycle



City Perspective: Multimodal Transportation

“Plan for a safe, multi-modal transportation network that allows residents and visitors to reach everyday connections comfortably and efficiently.”



City Perspective: Housing Options

“Provide more diverse housing types and ownership opportunities to support a growing and diversifying community.”



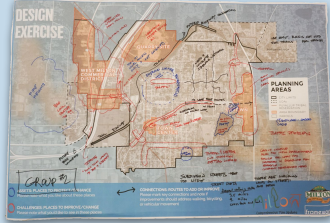
Creating a Community Vision & Future Land Use Map

Key Goals:

- Aspirational
- Guides plan elements in ways that are actionable
- Identifies land use solutions to further community vision

Openhouse Objectives

Openhouse Input



- Community Mapping Exercises
- Community visioning Exercises
- Community preference Exercises

Example from Milton, WA

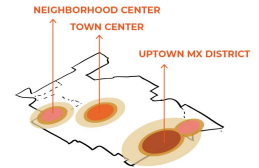
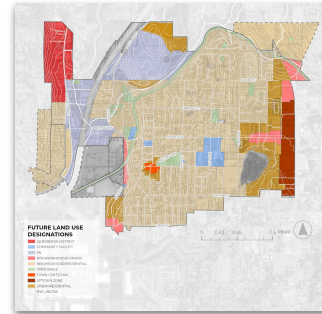
Land capacity modeling to comply with state job and housing targets

Input from City tabling Community Survey results Focus Groups



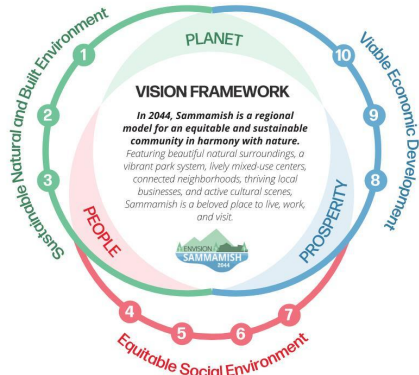
Community Vision

Future Land Use Map Development



Community vision examples

Vision Diagram



4

Vision Strategies

Sustainable Natural and Built Environment

- 1 Sustain Natural Environment and Reduce Climate Impacts. The City aims to protect tree canopies, water features, and natural habitats to sustain the natural environment. The City is committed to reducing and mitigating the climate impacts from buildings, transportation, and City operations.
- 2 Develop Multimodal Transportations. Work with King County Metro and other transit providers to enhance connectivity within Sammamish and access to the surrounding cities, including walking, biking, and transit network.
- 3 Develop a Distinguished Park and Recreation System. Create a park, open space, and recreational system that incorporates cultural amenities, and leveraging the unique natural resources of the Pacific Northwest to promote environmental conservation.

Equitable Social Environment

- 4 Ensure Inclusive, Connected, and Safe Neighborhoods. Plan neighborhoods that are safe, where people can meet, interact, and access retail, restaurants, key services, and other amenities within walking distance.
- 5 Provide a Variety of Housing Choices and Support a Wide Array of Lifestyles. Expand the range of available housing options to provide affordable and appropriate housing for individuals based on their needs and income.
- 6 Increase Diverse Job Opportunities and Access to Work in Sammamish. Many residents commute outside of Sammamish for employment; increase opportunities for work within Sammamish.
- 7 Foster Diversity, Equity and Inclusion through Purposeful Engagement and Quality Human Services. The City will maintain ongoing communication and engagement with the community and organizations on critical planning issues, provide opportunities for input and feedback, and promote the provision of high-quality human services to create an inclusive and welcoming environment.

Viable Economic Development

- 8 Build Thriving Town Center and Mixed-use Districts. The City will support the development of the Town Center that reflects Sammamish's identity and encourage redevelopment of walkable mixed-use districts for more housing, retail, services and amenities.
- 9 Support Local Businesses and Entrepreneurship. Provide support for a thriving local economy and nurture the community's entrepreneurial spirit.
- 10 Establish Fiscal Sustainability and Diversify Revenues for the City. The City is dedicated to improving and diversifying its tax base and revenue streams through economic development.

5

Plan Elements

Strategy 1

Strategy 2

Strategy 3

Strategy 4

Strategy 5

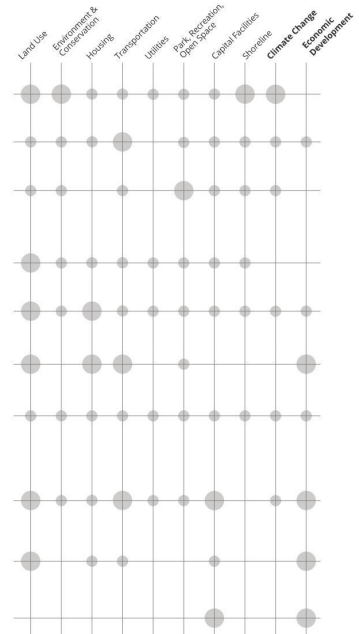
Strategy 6

Strategy 7

Strategy 8

Strategy 9

Strategy 10



6

Community Vision

Community vision example

COMMUNITY LAYOUT IN 2044



Example from Milton, WA

A WELL PLANNED SEMI-URBAN TOWN

- 1. **Retain semi-urban residential areas** by supporting growth in missing middle housing, and low rise density that fit within the existing character of residential neighborhoods.
- 2. **Plan and design complete neighborhoods** that provide a variety of housing types and connect people efficiently to the goods and services they need and ensure that access to basic amenities are provided equitably.
- 3. **Expand multi-generational housing options** so that people can stay in Milton as their housing needs may change.
- 4. **Preserve and enhance open space** to ensure all residents have access to quiet, relaxing and high performing green space.
- 5. **Preserve and invest in the parks, trails and open space system** to support an active and engaged recreation community.
- 6. **Retain and enhance existing environmental amenities** such as tree canopy and well functioning riparian and wetland areas.

HIGH QUALITY AND ACCESSIBLE TRANSPORTATION AND COMMUNITY INFRASTRUCTURE

- 7. **Make Milton safer for walking and biking** by reducing traffic impacts and providing safe and connected infrastructure that helps all people to get around their community with ease.
- 8. **Coordinate with WSDOT to mitigate traffic impacts** from major highways on our community.
- 9. **Invest in the infrastructure** needed to accommodate growth and maintain a high-quality of life in Milton.

ACCESSIBLE, ATTRACTIVE AND AMENITY RICH TOWN CENTER AND COMMERCIAL AREAS

- 10. **Develop the Town Center as the heart of Milton** with a mix of housing, jobs, parks, civic space, and retail and cultural amenities. The Town Center is where Milton comes together as a community.
- 11. **Support the local business community** by increasing the proximity of housing to commercial areas with high quality walking and biking connections.
- 12. **Support robust social programming** that brings our community together.

Past visioning efforts

Key Takeaways: 2021 Citywide Community Survey

- Downtown enhancement that builds on success of existing core businesses
- Community identity (indigenous and industrial) infused into more aspects of community design and activity
- Coordinated community design that matches multimodal transportation to coherent development

VISION FOR A FUTURE SULTAN

In a citywide Community Survey conducted in June and July 2021 and in focus group discussions, we asked local and regional residents to provide phrases that captured their hopes and vision for what downtown Sultan could look, sound, and feel like in ten years.



01 — Vibrant and thriving

Residents desire a downtown area bustling with activity, diversity, and commerce. Currently, downtown holds a great deal of potential with available storefronts, proximity to the riverfront, well-loved businesses like Kiss the Sky Books, Timber Monster Brewing Company, and the Sky Valley Chamber of Commerce. Residents imagine a downtown where vacancies are filled by restaurants and businesses that foster family-friendly shopping, gathering, and dining on both weekday and weekend evenings.



02 — Our assets and our history

In addition to updating amenities and attracting new businesses, residents envision a future Sultan that celebrates the city's indigenous and industrial history. Additionally, residents hope Sultan embraces its unique position as a "Gateway to Adventure" and part of the Cascade Loop. Economic and community development should ground itself in this dual lens – one that is forward-looking while documenting, preserving, and sharing history.



03 — Cohesion and connectivity

Sultan residents want a city that feels intentionally planned and encouraging of multimodal travel. Currently, downtown feels piecemeal, with mismatched buildings and storefront gaps that are uninviting and off-putting. Residents are not seeking a contrived city theme, but they do envision a future where downtown feels cohesive, with upkept storefronts that fit together. Additionally, focus group participants shared a desire to walk and bike safely into downtown using trails and protected multipurpose lanes that connect residents to the larger city.

Existing Comp Plan Vision (2011)

The Setting□

- Maintain the city's small town character
- Emphasize the recreation opportunities outside the immediate community and within the city
- Improve the visual image (buildings, landscape, and streetscape)

The Economy

- Diversify services so the shopping needs of Sultan residents can be met within the city
- Encourage small business
- Seek employment opportunities by accommodating industry and manufacturing

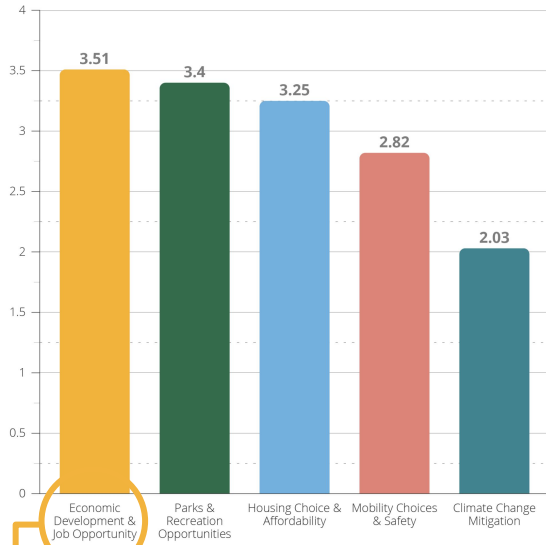
Housing□

- Maintain the single-family character while recognizing the need to provide housing for all income ranges

What we've heard so far

Comprehensive Plan Survey Key Takeaways

What are your top Priorities?



1. Economic development and job opportunity

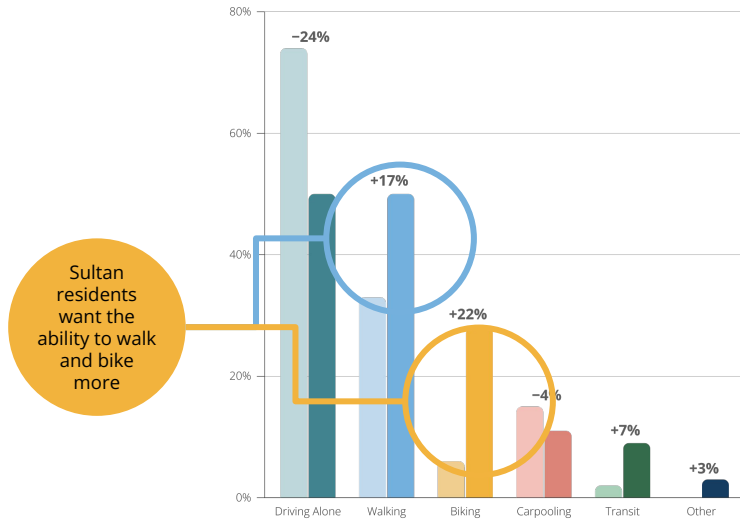
What do you love about Sultan?



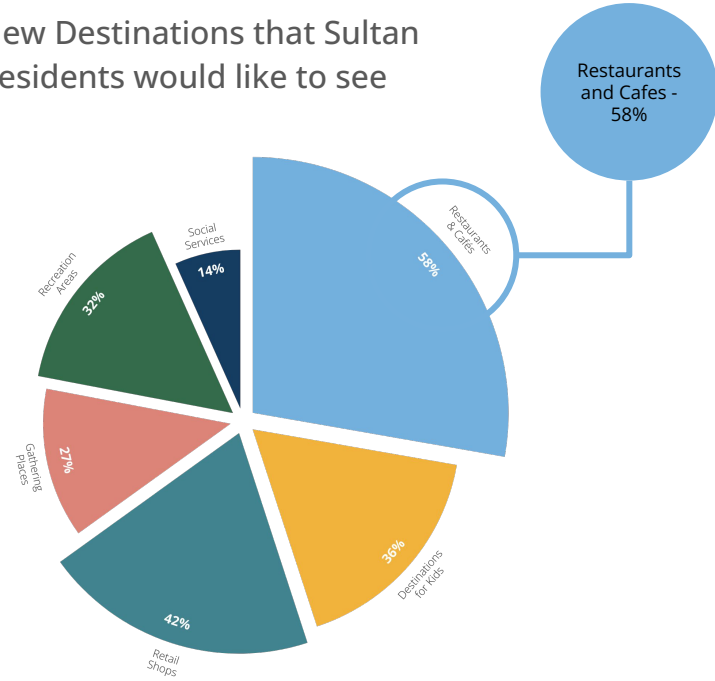
What we've heard so far

Comprehensive Plan Survey Key Takeaways

How do you get around vs how would you like to get around?



New Destinations that Sultan Residents would like to see



10 Big Ideas

Big Ideas from community engagement efforts up to this point



Idea #1: Plan for more grocery offerings, retail shops, restaurants, cafes, and other daily needs within the city.



Idea #2: Expand and enhance parks, recreation, and trails as distinguished community assets.



Idea #3: Plan for a safe, multi-modal transportation network that allows residents and visitors to reach everyday connections comfortably and efficiently.



Idea #4: Plan for climate resilience and mitigate natural hazards like floods and wildfire.



Idea #5: Ensure new growth provides community benefits and sufficient infrastructure.



Idea #6: Provide more diverse housing types and ownership opportunities to support a growing and diversifying community.



Idea #7: Provide more destinations for kids.



Idea #8: Establish a unique community identity that revolves around outdoor recreation and community belonging.



Idea #9: Plan for locally-serving commercial uses interspersed in Sultan's neighborhoods.



Idea #10: Ensure new development reflects and strengthens architectural styles unique to Sultan.



Land Use



Housing



Economic Development



Parks and Recreation



Capital Facilities



Utilities



Natural Environment



Transportation



Community Design

Community Visioning Exercise

**Please use your
phone or computer
to access the Slido
Live Poll!**

Join at slido.com
#1943484

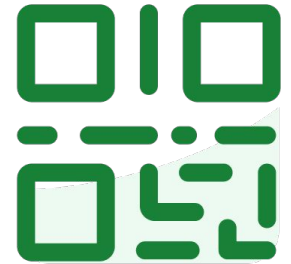
Scan Here!



Community Visioning Exercise

**Please use your
phone or
computer to
access the Slido
Live Poll!**

Join at
slido.com
#1943484



slido

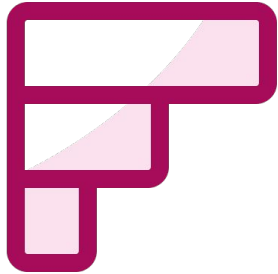
slido



In 2044, what is **one word** that you hope describes Sultan?

① Click **Present with Slido** or install our [Chrome extension](#) to activate this poll while presenting.

slido



In 2044, what would you like to have most within fifteen minutes of your home?

① Click **Present with Slido** or install our [Chrome extension](#) to activate this poll while presenting.

slido



Sultan Residents have told us that they love the city's small town feel.

Describe what you like most about living in a small city.

① Click **Present with Slido** or install our [Chrome extension](#) to activate this poll while presenting.



**Sultan
2044**

November 13, 2023

slido



What is one **place** in Sultan that **captures the community's essence**?

- ① Click **Present with Slido** or install our [Chrome extension](#) to activate this poll while presenting.

slido



What is one **event** in Sultan **that captures the community's essence?**

- ① Click **Present with Slido** or install our [Chrome extension](#) to activate this poll while presenting.

slido

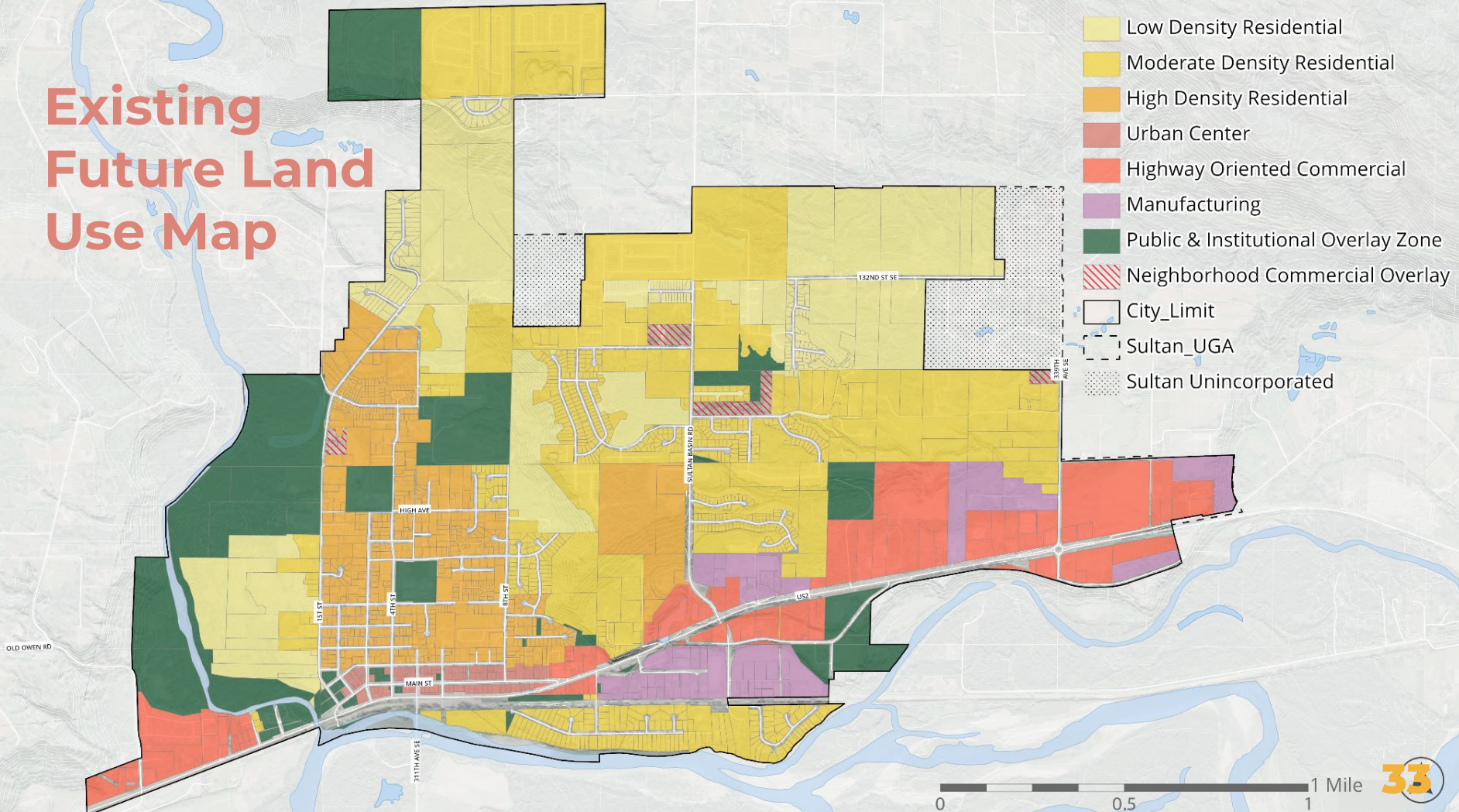


What **communities** should we look to as **models for Sultan**, and what aspect of them should we reference?

- ① Click **Present with Slido** or install our [Chrome extension](#) to activate this poll while presenting.

Future Land Use Map

Existing Future Land Use Map

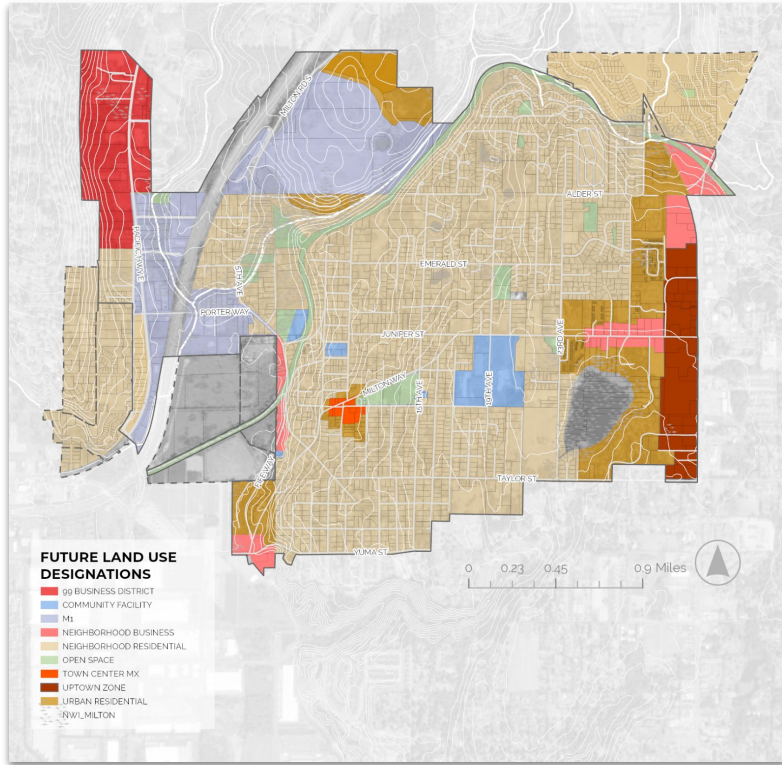


- Low Density Residential
- Moderate Density Residential
- High Density Residential
- Urban Center
- Highway Oriented Commercial
- Manufacturing
- Public & Institutional Overlay Zone
- Neighborhood Commercial Overlay
- City_Limit
- Sultan_UGA
- Sultan Unincorporated

0 0.5 1 Mile

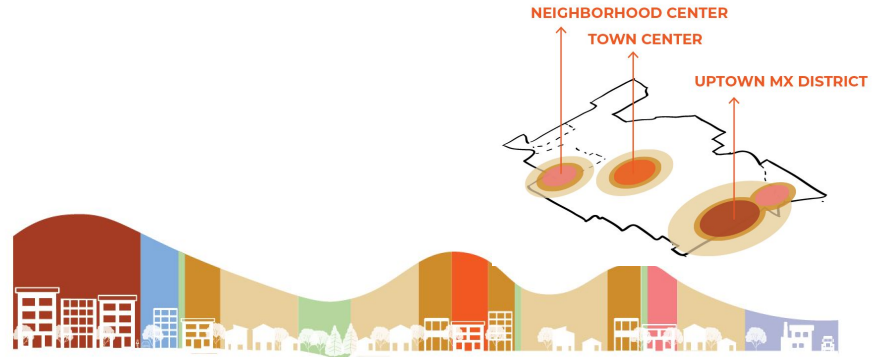


Future Land Use Map example



FLUM Intent:

- Sets up types of land use relationships that support the community vision while meeting state growth requirements
 - *Example: Putting denser housing next to amenities to support local businesses and provide affordable housing*



Example from Milton, WA

Small Group Mapping Exercise

**Please join a
table with a
map!**

Mapping objectives:

1. **Community Assets** (key services, environmental amenities, anything in Sultan that makes the community a better, more cohesive place to live)
2. **Community Challenges** (barriers to access, hazards, gaps in services and other constraints)
3. **Key Connections** and connection opportunities (places where there are existing linkages, or potential linkages)